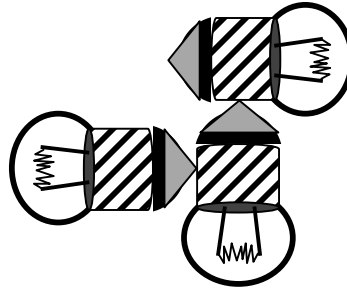
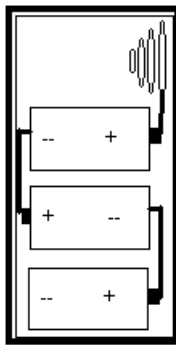
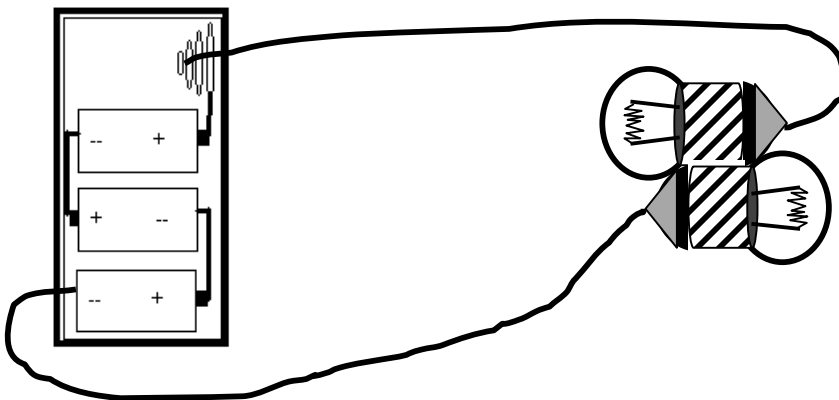


CASTLE Unit 1 - Worksheet 2: Continuous Conducting Paths and the Internal Path Through a Bulb.

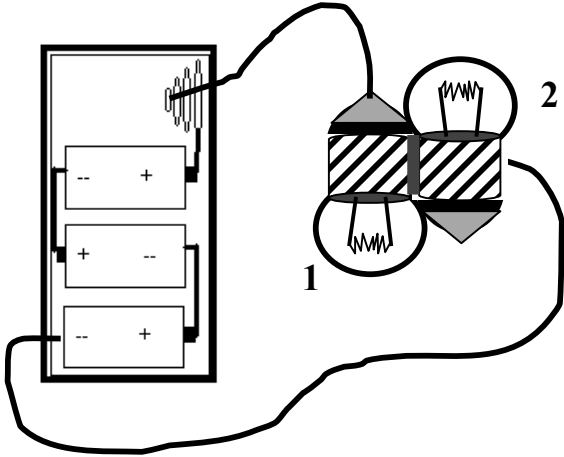
1. Examine the picture below. You have a battery pack and three cells arranged like so. You are given two wires to make all three bulbs light.
 - a) draw the wires
 - b) in another color, trace the Continuous Conducting Path (CCP) through the circuit – this includes through the filaments of the bulbs and the batteries!



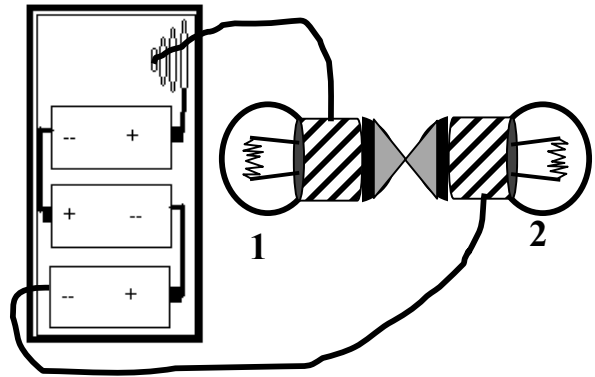
2. Homer and Hilda found a way to light two bulbs with a 3-cell battery and only 2 wires! Trace the CCP throughout the entire circuit.



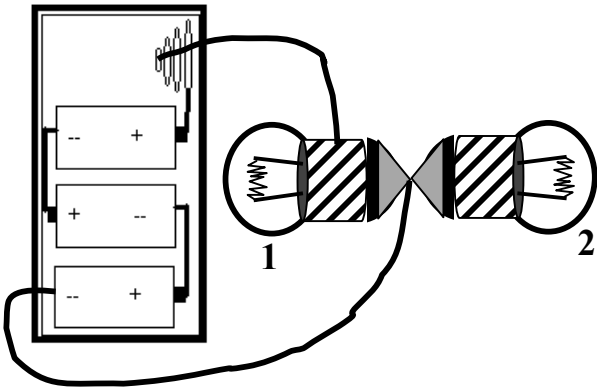
Here are some more attempts from Homer and Hilda. Your job is to trace the CCP and determine which of the bulbs will light. Note: the bulbs are always touching each other.



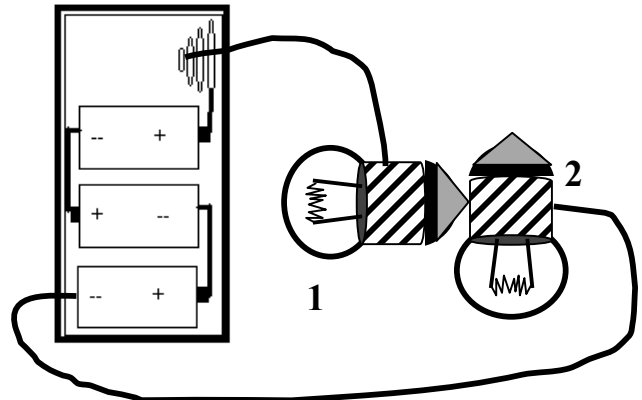
3. bulb 1:	Lit	Unlit
bulb 2:	Lit	Unlit



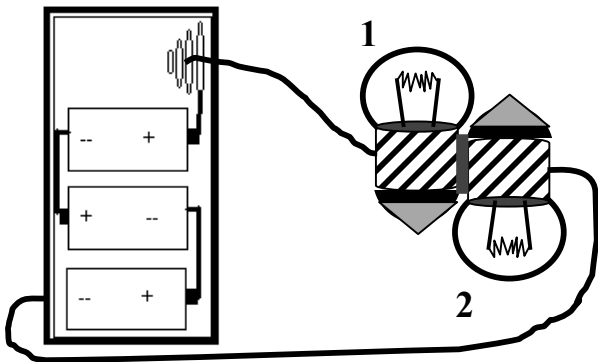
4. bulb 1:	Lit	Unlit
bulb 2:	Lit	Unlit



5. bulb 1:	Lit	Unlit
bulb 2:	Lit	Unlit



6. bulb 1:	Lit	Unlit
bulb 2:	Lit	Unlit



7. bulb 1:	Lit	Unlit
bulb 2:	Lit	Unlit